



Bishops Grove, Windlesham

£1,000,000



Bishops Grove, Windlesham, Surrey, GU20 6QQ

An exceptional five bedroom detached house in Windlesham occupying a larger than average corner plot with space to the side.

FEATURES

- 16 Solar panels
- Double glazing
- Cul-de-sac
- Walking distance to village shops
- LED lighting throughout
- Boiling hot water tap/Corian worktops
- CCTV alarm system

ACCOMMODATION

- Entrance hall
- Downstairs cloakroom
- Three reception rooms
- Kitchen/breakfast/orangery
- Utility room
- Five bedrooms (two en suite)
- Family bathroom

OUTSIDE

- Double garage with electric doors
- Additional timber garage/workshop
- Driveway parking for four cars
- Brick built garden storage shed
- Garden office
- Garden with raised decking area
- African gazebo

EPC RATING

A

LOCAL AUTHORITY/COUNCIL TAX

Surrey Heath – Band G







Approximate Gross Internal Area
214.2 sq m / 2305.63 sq ft
(Excludes Garage / Outbuilding)
Garage Area 27.70 sq m / 298.16 sq ft
Outbuilding Area 39.0 sq m / 419.79 sq ft

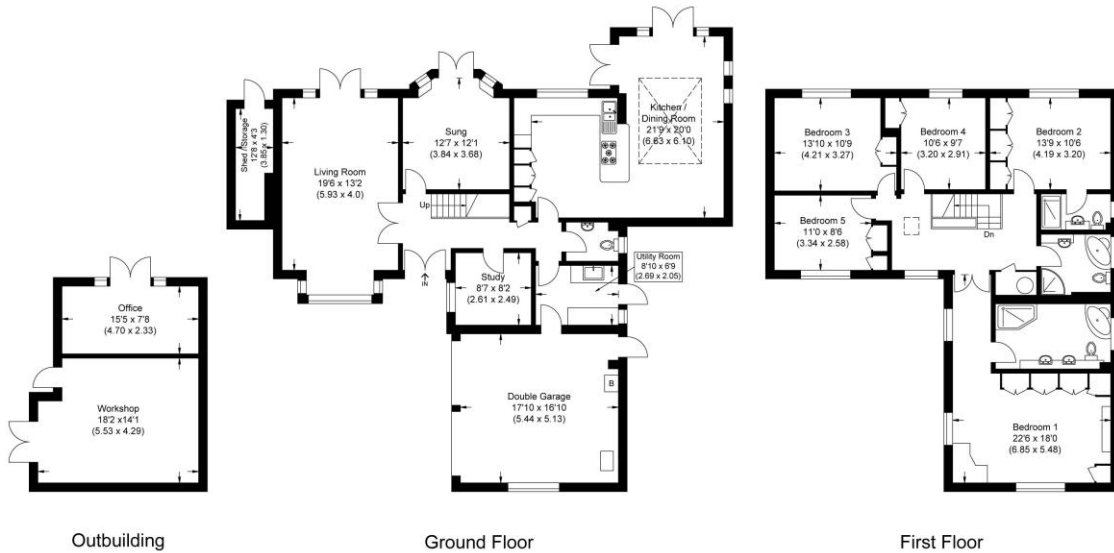
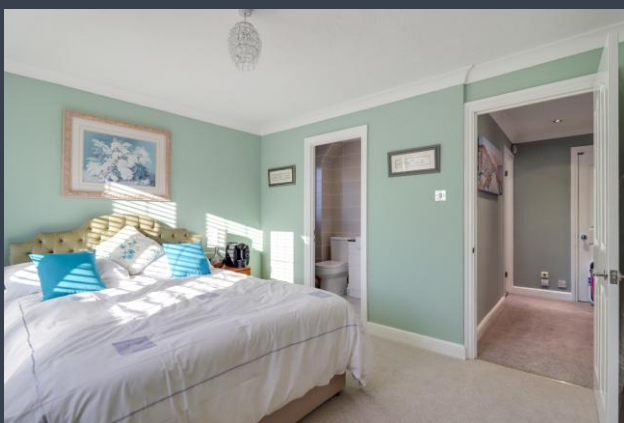


Illustration for identification purposes only, measurements are approximate, not to scale.

Disclaimer: We wish to inform prospective purchasers that we have prepared these sales particulars as a general guide. We have not carried out a detailed survey, nor tested the services, appliances and specific fittings. Room sizes are approximate and rounded: they are taken between internal wall surfaces and therefore include cupboards / shelves, etc. Accordingly, they should not be relied upon for carpeting, curtains / blinds and kitchen equipment, whether fitted or not, are deemed removable by the vendor unless specifically itemized within these.

Postcode for sat nav: **GU20 6QQ**



NEWTON ROWE
SALES & LETTINGS

The Old Dairy, 7 Updown Hill, Windlesham, Surrey GU20 6AF
enquiries@newtonrowe.co.uk | 01276 986900